



SPEC

**Supplying Parts, Equipment
& Chemical Engineering Co.**

www.spec.ir

2021 - 2022



Your Reliable Supplier

About Us

Supplying Parts, Equipment & Chemical Engineering Co. (SPEC) Group is a leading supplier of the Chemical raw materials, spare parts, equipment and the machineries for the Petrochemical, Oil & Gas industries since 1998. Relying on remarkable experiences and benefiting from talented human resources as well as the International offices, SPEC is known as a reliable company for the industries to support the production requirements and their on-going development projects.



Shareholder



100% of SPEC Group's shares belong to the Petrochemical Commercial Company (PCC) which was established in July 1990. PCC is a leading exporter of the petrochemical products to more than 35 countries. Please visit **www.petrochem-ir.net** for more information.

Meanwhile, 45% of PCC's shares belong to the Persian Gulf Petrochemical Industries Co. (PGPIC). PGPIC is the 1st rank in terms of sales, profitability, export and value added indicators in Iran, 2nd Largest Petrochemical Company in the Middle-East and 40th Largest Petrochemical Company in the world (Acc. to ICIS Ranking – 2019). Please visit **www.pgpic.ir** for more information.

Based on this excellent reputation, SPEC has a high market penetration rate and has a significant advantage over competitors.



Subsidiary Companies



SPEC Group is the Major shareholder (64%) of **the Takht-e-Jamshid Petrochemical Company (TJPC)**, TJPC is located at the Petrochemical Special Economic Zone in Mahshahr Port, Khuzestan Province, and South West of Iran.

TJPC is a World Class Manufacturer of Styrene Butadiene Rubber (SBR 1502, 1712, and 1723), Polybutadiene Rubber (PBR 1220) & Styrenated Phenol (SP).



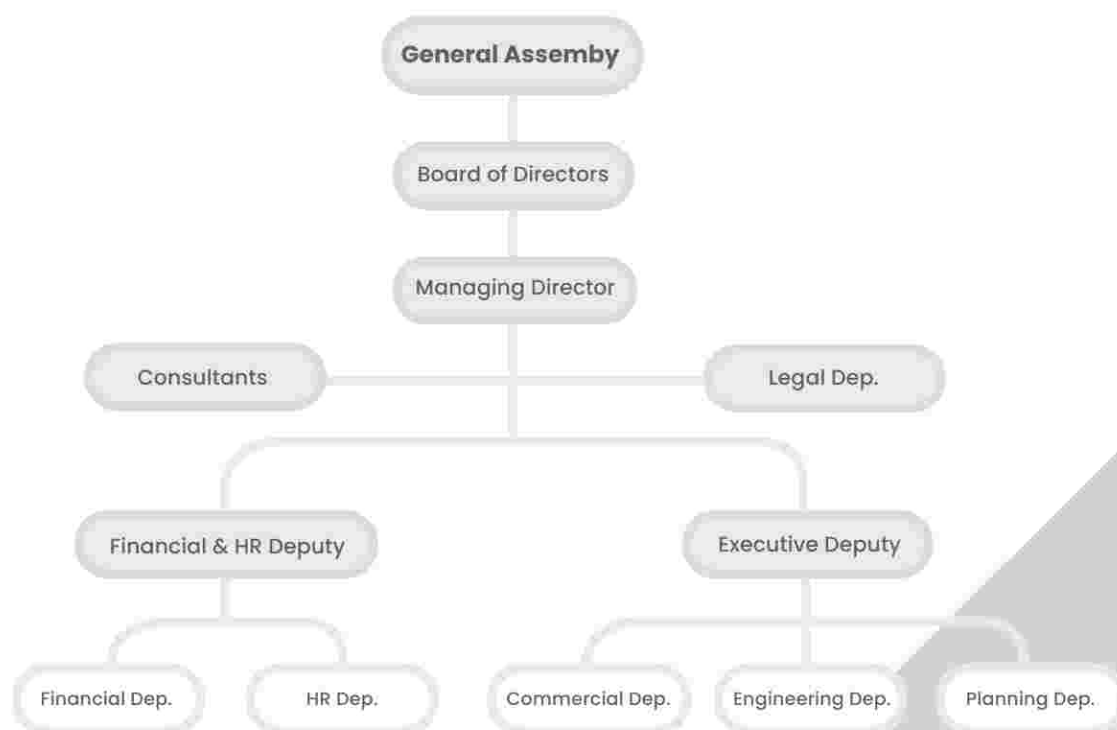
Kimiagaran Pars Hallal Arvand

Kimiagaran Pars Hallal Arvand Co. (KPHA) Established in 2021 as a new Manufacturing plant to produce Bioethanol with 99.6% purity from Sugarcane molasses and Glucose with the annual production capacity 30,000 lit/day on 5,000 sqm area in Arvand Free Zone, Khuzestan Province.

According to the project time schedule, the construction process is expected to be completed by the end of 2021 and the operation will start with 80% of the nominal capacity from 2022. The plant by-products will include Vinasse and food grade CO₂. The total CAPEX is about €6.5 million, with 80% investment by SPEC Group.

SPEC Top Level Organizational Chart

We are a well-Organized company. In order to establish a sense of trust and professionalism in the workplace, SPEC has a perfect Organizational chart to balance many tasks efficiently and effectively. It allows the departments to work together without wasting time. Organization is important for dealing with information as well. The below chart shows the top level organizational chart. We recommend you to visit our website for more details.

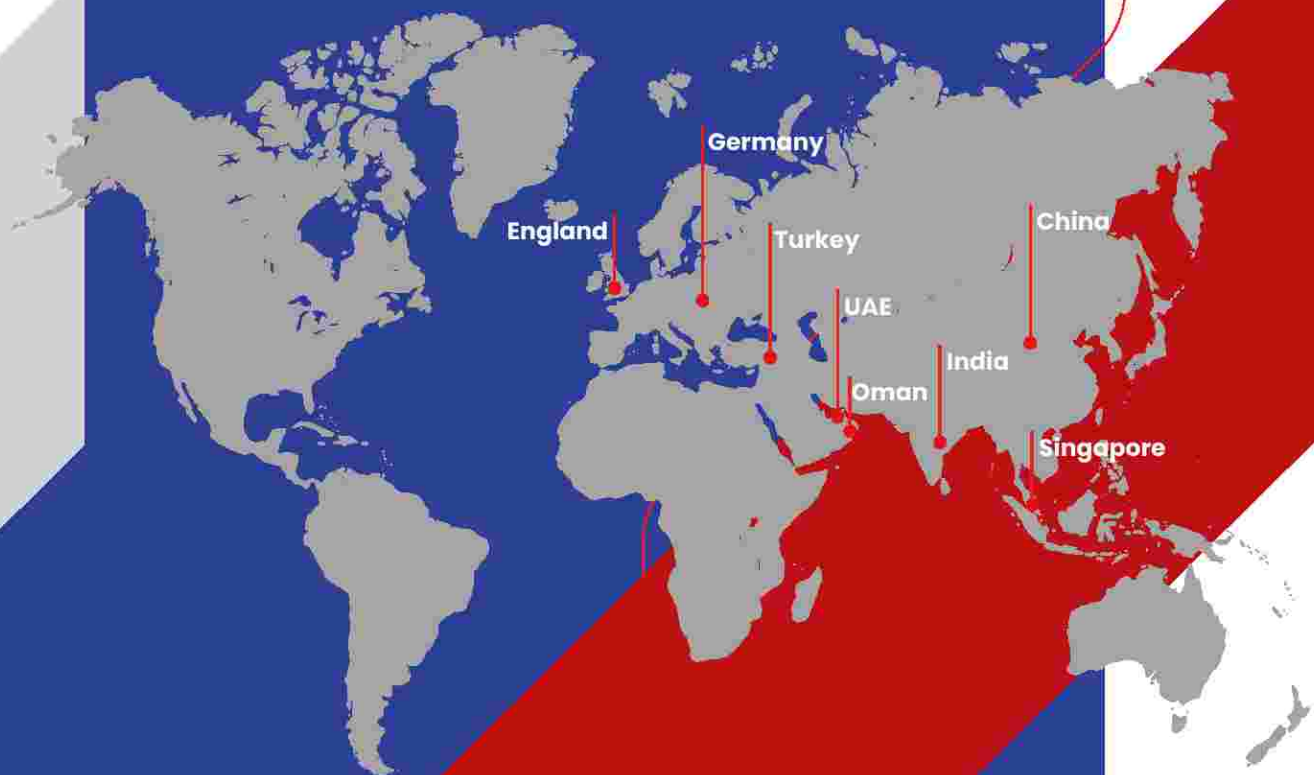


Key Clients List

- Aryasasol Polymer Co. (ASPC)
- Jam Petrochemical Co. (JPC)
- Razi Petrochemical Co. (RPC)
- Takhte Jamshid Petrochemical Co. (TJPC)
- Nouri Petrochemical Co. (NOPC)
- Khorasan Petrochemical Co. (KHPC)
- Amir Kabir Petrochemical Co. (AKPC)
- Bushehr Petrochemical Co. (BUPC)
- Pardis Petrochemical Co. (PAUPC)
- Tabriz Petrochemical Co. (TPC)

Our Network

We have associates in 10 countries. The regional offices support SPEC activities within the region. With offices in the Far-East, South-Asia, Middle-East and West-Europe, we have an established presence in key Industrial and Business centers worldwide.



- Germany
- England
- Turkey
- Oman
- UAE
- India
- China (Shanghai, Beijing, Guangzhou)
- Singapore

Services

We are a capable supplier of the Chemical raw materials, equipment, spare parts by creating a stable and reliable supply chain system from the well-known, world class brands throughout the world. Our typical regular industry field equipment supply includes but is not limited to the following;

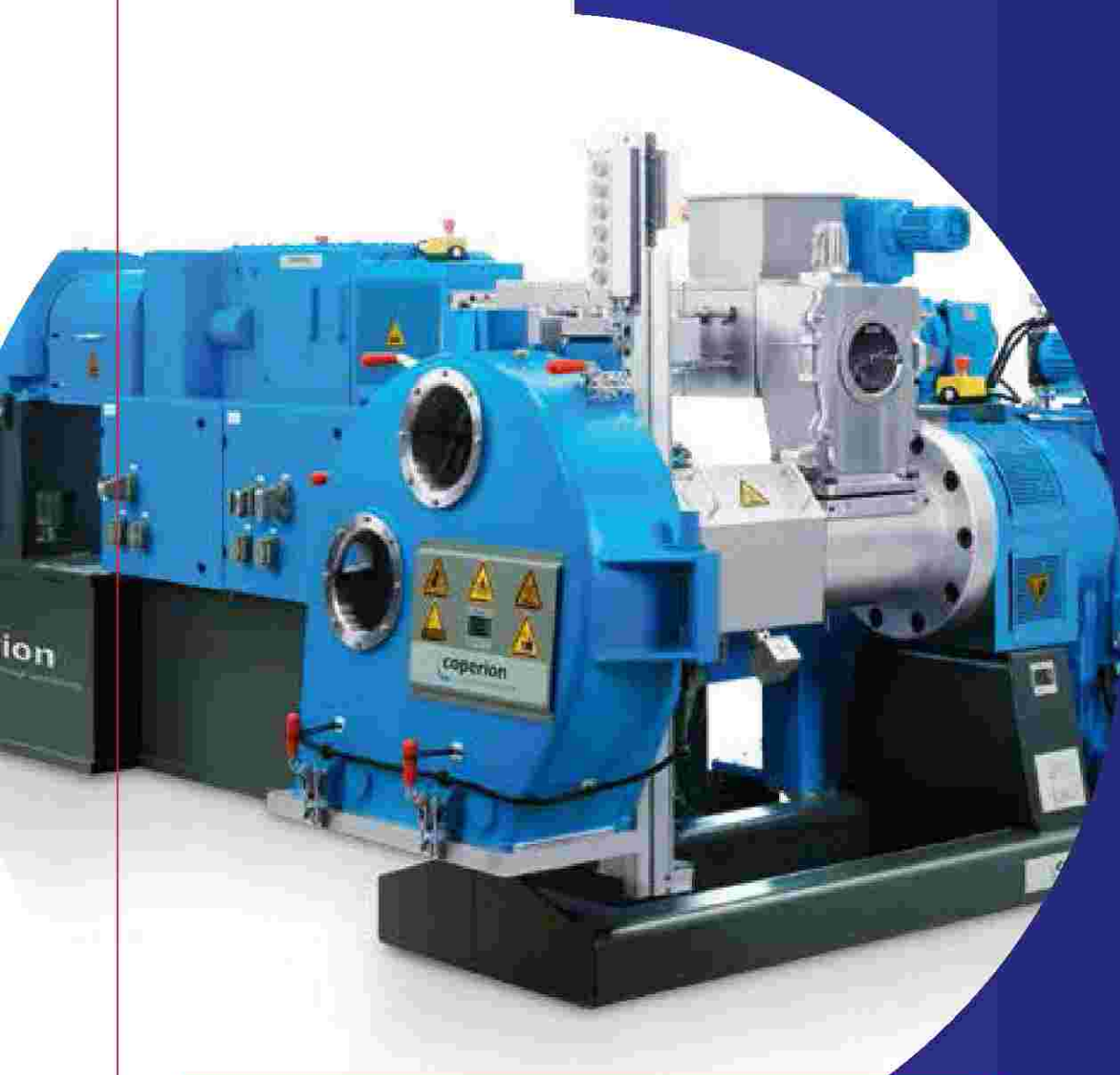
- Chemical & Catalyst Supply
- Mechanical Equipment and Spare Parts Supply
- Electrical & Instrumentation Equipment and Spares
- Engineering Services
- Planning Services



Chemical & Catalyst Supply

Lube Oil & Coolant, Antioxidant, Calcium Stearate, Zinc Stearate, Viton, Additive, ODCB, TBC, Slip Agent, Atmer, NMP, Donor C, Activated Carbon, Activated Alumina, Molecular Sieve, White Mineral Oil, DMDS, TPP, Carbon Black, Antistatic Agent, MDEA, Antiblock, All type of Absorbents, Catalysts, Oils and Grease, Rosin SDD, Antioxidants, Hexene 1, N Hexene, PMHP,





Mechanical Equipment and Spare Parts Supply

- Rotary Equipment such as pumps, Turbines, Compressors, Fan & Blowers, Coupling, etc.
- Fixed Equipment such as Heat Exchangers, Heaters, Silencers, Separators and Filtering System, etc.
- Piping such as Pipes, Fittings, Flanges, Valves, Strainers, Steam traps, Hangers, etc.
- Package Unit such as Utility and Process packages
- Machineries such as Forklifts, Milling & Turning Machines, Waterjet, etc.

Electrical & Instrumentation Equipment and Spares

- Power Transformer, Static Converter, Battery, Switch Gera, Lighting, Control & Indication system, Electrical Motor, Fire Alarm System, Cathodic Protection, AC Generators, Components, etc.
- On-Line Analyzer, HSE Equipment, Field Device, HMI, Vibration Monitoring System, Indicator, Recorder, Control Panel, PLC, BMS, Controller, Data Logger, etc.
- Control Valves



Planning Services

The Planning Dep. has the supporting role for the Executive units such as Engineering and Commercial Departments. This services can also be provided for the individual customers based on their customized requirements.

Business Intelligence (BI), Procurement Management Software, IT & Networking, Quality Assurance Procedures, Project Management Office (PMO), Training Services, etc.



The background of the page is a grayscale photograph of an industrial facility, likely a refinery or chemical plant. It features a complex network of pipes, structural steel beams, and large storage tanks. A prominent red diagonal line runs from the top right towards the bottom left, intersecting the blue overlay. The blue overlay is a large, irregular shape that covers the upper and middle portions of the page, containing the text.

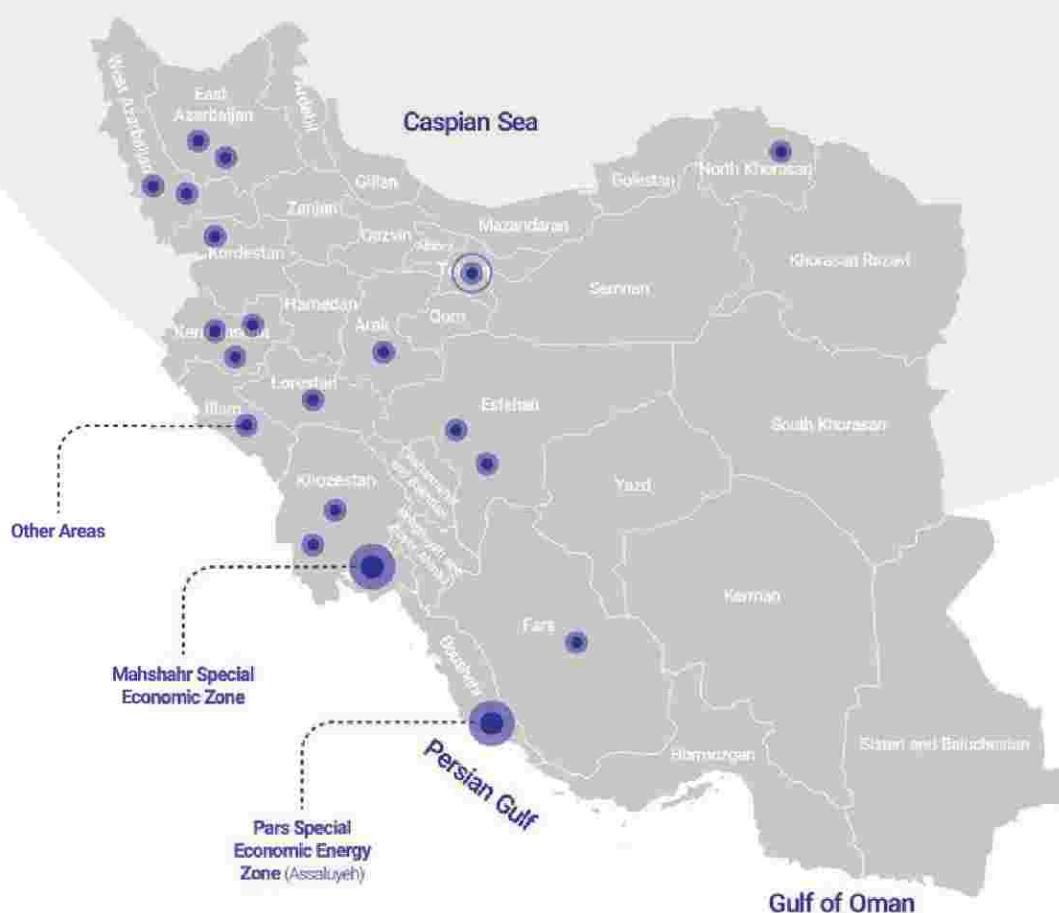
Engineering Services

In addition to equipment supply services, SPEC Group also offers a wide range of engineering services to serve and support the customers as a solution provider partner.

Project Management Consultancy Services, Conceptual and Detailed Design, Proper Engineering Documentations, Projects Risk Assessment, Business Development Management, Projects Feasibility Study & Survey Plan, Commissioning Support, etc.

Iran, a Land of Opportunity

The genesis of the petrochemical industry in Iran dates back to 1958. Owing to the size of the domestic market and the availability of huge hydrocarbon reserves, the industry saw rapid development and expansion in the ensuing years. Now, Iran is a major player in the global petrochemical market with the world's second-largest natural gas reserves and second-largest economy in the Middle-East and North Africa. The below statistics show the number of petrochemical complexes with annual production capacity divided by the zone.



Number of Active Petrochemical Complexes by Region

58

Mahshahr Special Economic Zone

20

Pars Special Economic Energy Zone (Assaluyeh)

19

Other Areas

19

Nominal Production Capacity by Region

74 mt/year

Mahshahr Special Economic Zone

13.9 mt/year

Pars Special Economic Energy Zone (Assaluyeh)

34.4 mt/year

Other Areas

25.6 mt/year

Nominal Production Capacity by Product Category

74 mt/year

Basic Chemicals

35.8 mt/year

Feedstock and Fuels

18.5 mt/year

Polymers

8.4 mt/year

Fertilizers

7.0 mt/year

Aromatics

4.2 mt/year



**We Support Your
Investment**



SPEC

**Supplying Parts, Equipment & Chemical
Engineering Co.**

Address: No. 38, Nelson Mandela Blvd, Tehran, IRAN

Postal Code: 1517654614

Tel: +98 (0)21 88 66 20 66

Fax: +98 (0)21 88 79 18 67

Email: info@spec.ir

Website: www.spec.ir

Registration number: 89249

National ID: 10101336369

Economic ID: 411148565678